

# MONTHLY MEMBERSHIP PROGRESS REPORT

LOCATION INDIA

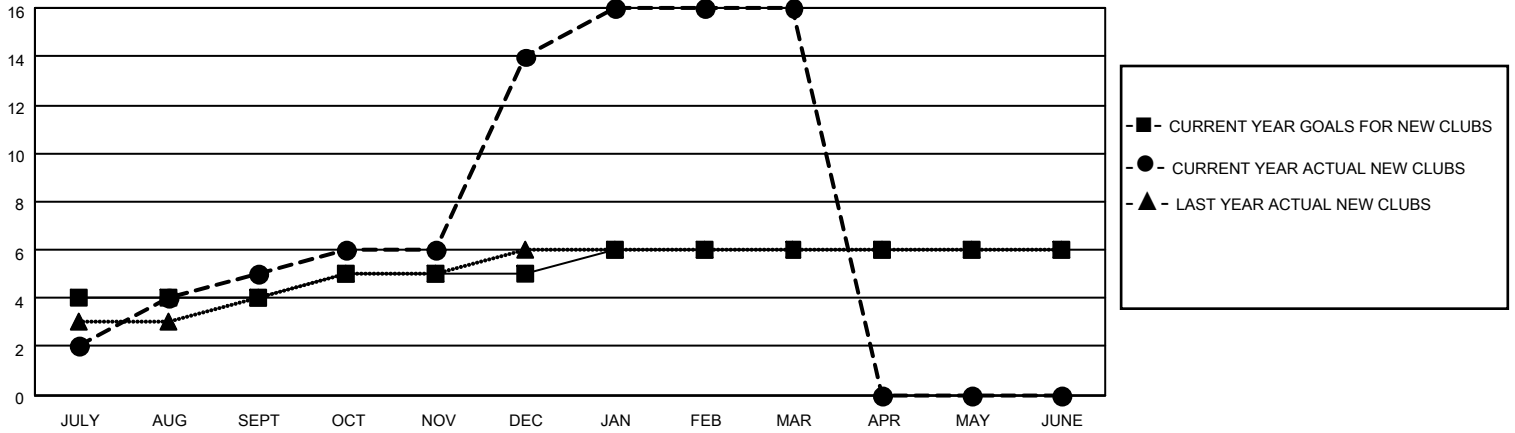
District 3234D2

Results as of: 3/31/2021

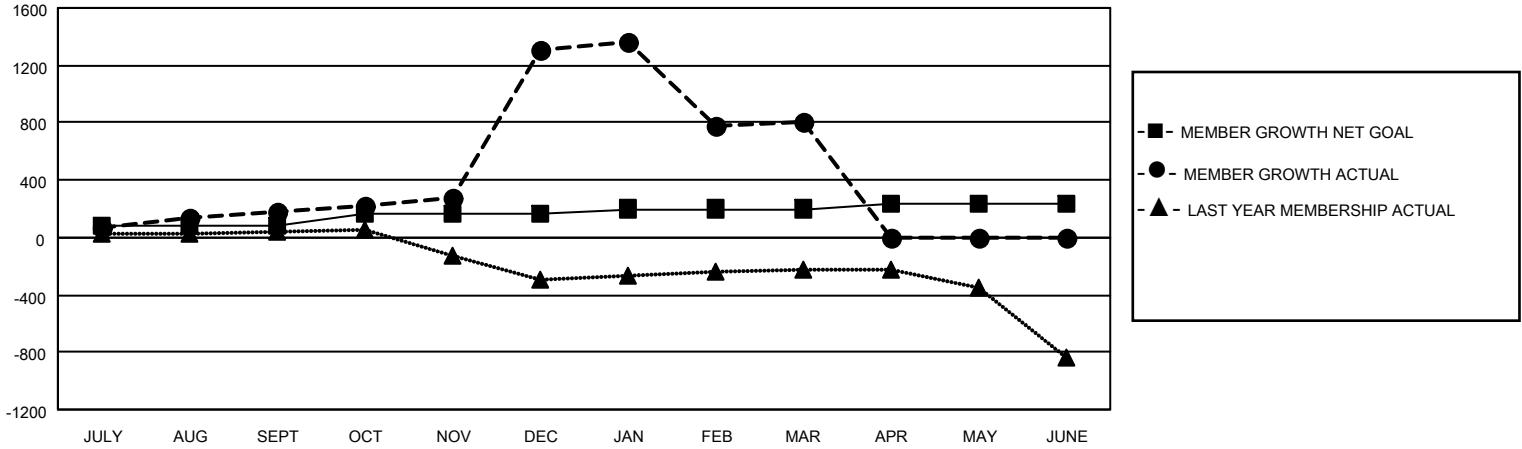
Clubs			
RESULTS FOR 2020-2021			
QUARTER	NEW CLUB GOAL	NEW CLUBS	DROPPED CLUBS
JULY/AUG/SEPT	4	5	3
OCT/NOV/DEC	1	9	0
JAN/FEB/MAR	1	2	25
APR/MAY/JUNE	0	0	0

Members			
RESULTS FOR 2020-2021			
QUARTER	MEMBER GROWTH NET GOAL	MEMBER GROWTH ACTUAL	DROPPED MEMBERS ACTUAL (including transfers)
JULY/AUG/SEPT	80	285	99
OCT/NOV/DEC	80	1542	410
JAN/FEB/MAR	40	448	796
APR/MAY/JUNE	40	0	0

**GOALS AND ACTUAL NEW CLUBS CUMULATIVE**



**GOALS AND ACTUAL MEMBERS CUMULATIVE**



DROPPED CLUBS: 28	91 CLUBS OF 151 ADDED 1 OR MORE NEW MEMBERS	<p style="text-align: center;"><u>GENDER DISTRIBUTION</u></p> <p>MALE            4,552 (57.98%)</p> <p>FEMALE         3,299 (42.02%)</p>
<p style="text-align: center;"><u>DROPPED MEMBERS</u></p> <p>DECEASED            14</p> <p>CLUB CANCELLED     608</p> <p>OTHER                 683</p> <hr/> <p>TOTAL                 1,305</p>	<p><a href="#">CLICK HERE FOR CUMULATIVE MEMBERSHIP DATA</a></p>	<p>TOTAL FAMILY UNIT MEMBERS            8,135</p> <p>FAMILY MEMBERS PAYING HALF DUES            4,900</p>